

USER MANUAL

PLATINUM

Brushless Electronic Speed Controller
Platinum 25A & 40A V4



Thank you for purchasing this HOBBYWING product! Please read this declaration carefully before use, once you start to use, we will assume that you have read and agreed with all the content. Brushless power systems can be very dangerous and any improper use may cause personal injury and damage to the product and related devices, so please strictly follow the instruction during installation and use. Because we have no control over the use, installation, or maintenance of this product, no liability may be assumed for any damages or losses resulting from the use of the product. We do not assume responsibility for any losses caused by unauthorized modifications to our product. Besides, we have the right to modify our product design, appearance, features and usage requirements without notification. We, HOBBYWING, are only responsible for our product cost and nothing else as result of using our product. Regarding the possible semantic different between two different versions of declaration, for users in mainland China, please take the Chinese version as standard; for users in other regions, please take the English version as standard.

01 Warnings

- Read through the manuals of all power devices and aircraft and ensure the power configuration is rational before using this unit, as improper power configuration will overload the motor and damage the unit.
- When installing this unit, relevant operations like soldering and connecting will be needed, so please ensure all wires and connections are well insulated before connecting the unit to related devices, as short circuit will damage the unit. When soldering relevant wires of the unit, please use a soldering iron with sufficient power to do the soldering, as poor connection may cause your aircraft to lose control or other unpredictable issues like damage to the device.
- Always keep your aircraft away from unsafe elements like obstacles, crowd, high-voltage power lines. Please fly your aircraft in the working environment as regulated in this manual. Although there are some protections, improper use may still cause permanent damage to the product.
- Always disconnect and remove batteries after use, as the ESC may drive the motor to rotate and cause unpredictable danger if it's still connected to the battery. Long-time contact will cause the battery to completely discharge and result in damage to the battery and the ESC. This will not be covered under warranty.

02 Features

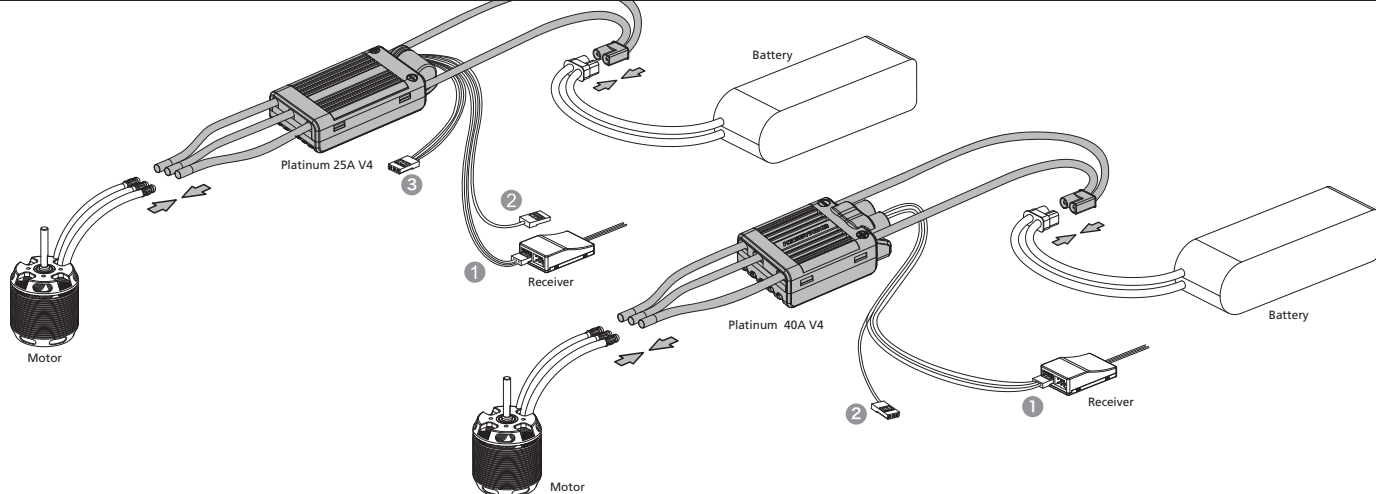
- High performance 32-bit microprocessor with the running frequency of up to 72MHz for excellent performance. The microprocessor powered by the separate voltage-regulating IC, which features great anti-interference performance, greatly reduces the possibility of losing control.
- Separate switch-mode voltage-regulating BEC with adjustable voltage. The BEC is separated from other circuits, its normal output will be guaranteed to protect your aircraft from crash when issues like the power board of the ESC is burnt occur.
- DEO (Driving Efficiency Optimization) technology or Freeheeling for smoother throttle response, higher driving efficiency and lower ESC temperature.
- Four flight modes: Fixed-wing, Helicopter (External Governor), Helicopter (EIF Governor), and Helicopter (Store Governor).
- Soft start-up in the three Helicopter modes.
- Helicopter speed-governing function, which features adjustable "Governor Parameter P", is easy to use. It can guarantee the stable rotation of main blades when the load changes dramatically.
- Auto Restart Time allows you to interrupt the shutdown and landing during the present time and restart the motor promptly to avoid crash caused by improper operation.
- Data logging can record the minimum voltage, the maximum temperature and the standardized RPM of the current flight and output the running data of the ESC in real time (HOBBYWING WiFi Express module, HW Link mobile phone APP are needed).
- RPM Signal Output port for outputting the electrical RPM of the motor (calculated in 2 poles) in real time.
- Reverse Brake allows your aircraft to simulate the landing of a real aircraft. That is a reverse thrust will be generated when the propeller rotates reversely to shorten the coasting distance and make the aircraft stop rapidly.
- Separate programming port for connecting HOBBYWING LCD program box or WiFi Express module.
- ESC programming, firmware upgrade, and data checking via HOBBYWING WiFi Express module, HW Link mobile phone APP allows you to program your ESC, upgrade its firmware and check relevant data wirelessly (HOBBYWING WiFi Express module is needed).
- Real-time data checking for checking the running data of your ESC in real time via HOBBYWING WiFi Express module, HW Link mobile phone APP.
- Online data checking, ESC programming, firmware upgrade are supported (HOBBYWING LCD program box & PC or WiFi Express module & Smartphone are needed).
- Multiple protections like start-up protection, ESC thermal protection, capacitor thermal protection, over-current protection, overload protection, and throttle signal loss protection.

03 Specifications

Model	Platinum 25A V4	Platinum 40A V4
Cont./Peak Current	25A/40A	40A/60A
Input Voltage	3-6S LiPo	3-6S LiPo
BEC	Switch-mode 6V / 7.4V Adjustable, Cont./Peak: 3A/7A	Switch-mode, 5-8V Adjustable (Step: 0.1V), Cont./Peak: 7A/18A
Input / Output Wires	Black & Red 16AWG input wires / Black 16AWG output wires	Black & Red 16AWG input wires / Black 16AWG output wires
Separate Programming Port	Short Black & Red & White wires with J8 3PIN connectors, for connecting LCD Program Box or WiFi Express	For connecting LCD Program Box or WiFi Express
Size / Weight	47x22x10mm / 27g	48x30x15mm / 47g
Application	250Class electric Helicopter (Main Blades: 200-300mm), electric fixed-wing, multi-rotor	300 Class electric Helicopter (Main Blades: 280-325mm), electric fixed-wing, multi-rotor

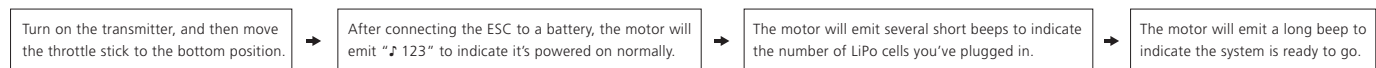
04 User Guide

1 Wiring

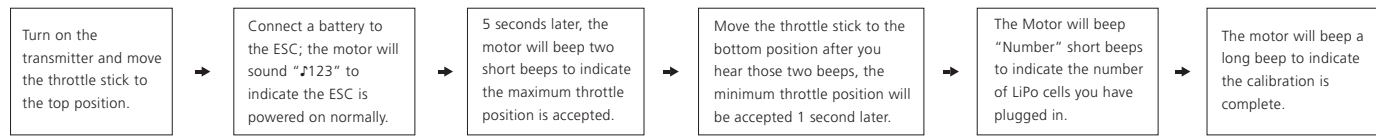


- Throttle Signal Cable (White/Red/Black): plug it into the TH throttle on the receiver or the corresponding channel on the Flybarless system. About which channel you should plug it in, it depends on the receiver type and the Flybarless system type. The white wire is for transmitting throttle signals, the Red & Black wires are connected to the output end of the internal BEC in parallel (that is they are BEC output wire and ground wire).
- RPM Signal Wire (Yellow): plug it into the RPM input channel on the Flybarless system. (This wire can be used for providing RPM signal input when using external device for speed-governing.)
- Separate Programming Cable (the short White/Red/Black cable): for connecting the ESC to a LCD program box or WiFi Express module.

2 Normal Start-up Process



3 ESC/Radio Calibration

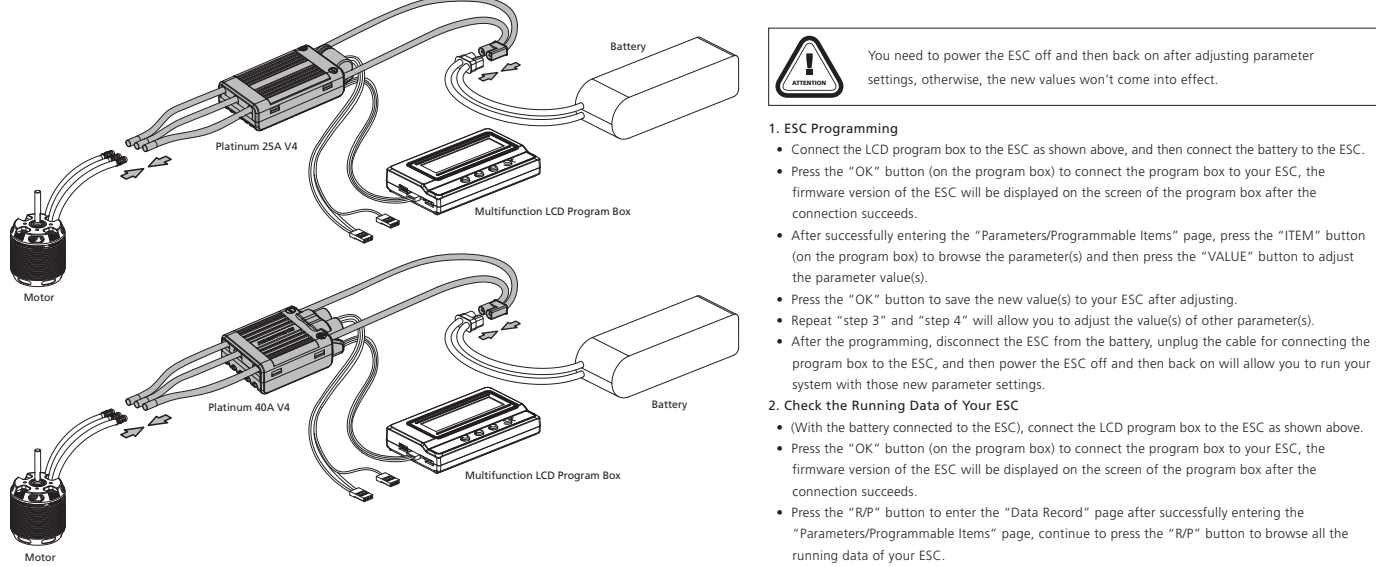


- The throttle range of the ESC is from 1100us to 1940us by default. You need to re-calibrate the throttle range when the first time you use this ESC or after you change the transmitter.
- During the ESC/Radio calibration, please set the throttle curve to NORMAL and ensure the corresponding throttle amounts to the maximum throttle endpoint and the minimum throttle endpoint on your transmitter are respectively 100% and 0%.

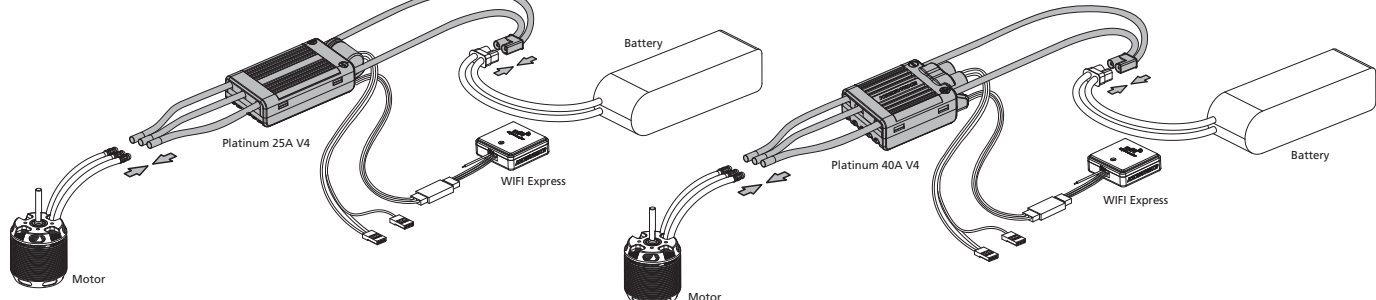
05 ESC Programming & Data Checking

- The parameters of this ESC are programmable, you can adjust relevant parameter settings to meet different flight demands.
- The ESC will record relevant data like the standardized speed (it can only be checked and won't disappear when the ESC is disconnected from the pack in "Helicopter (Store Governor)" mode), the minimum voltage, and the maximum temperature of the current flight. Therefore, if you want to check the relevant data after the flight, please keep the ESC connected to the pack and then connect the LCD program box or WiFi Express module to the ESC to check the data. Those data won't be stored after the pack is disconnected from the ESC.

1 Program Your ESC with a Multifunction LCD Program Box



2 Program Your ESC with a WiFi Express (Item sold separately)



- After adjusting parameters, you need to power your ESC off and then on. Otherwise, those new parameters won't take effect.

06 Programmable Parameters & Explanations

Programmable Parameters

(1) There are four flight modes available for the ESC, please refer to the following form to check the programmable items under each mode. (** in the form below indicate factory defaults.)

Flight Mode	Fixed-wing	Helicopter (External Governor)	Helicopter (EIF Governor)	Helicopter (Store Governor)
LiPo Cells	Adjustable	Adjustable	Adjustable	Adjustable
Voltage Cutoff Type	Adjustable	Adjustable	Adjustable	Adjustable
Cutoff Voltage	Adjustable	Adjustable	Adjustable	Adjustable
BEC Voltage	Adjustable	Adjustable	Adjustable	Adjustable
Response Time	N/A	It turns to "Soft Start-up Enabled/Disabled"	Adjustable	Adjustable
Governor Parameter P	N/A	N/A	Adjustable	Adjustable
Governor Parameter I	N/A	N/A	Adjustable	Adjustable
Auto Restart Time	N/A	N/A	Adjustable	Adjustable
Restart Acceleration Time	N/A	N/A	Adjustable	Adjustable
Brake Type	Adjustable	N/A	N/A	N/A
Brake Force	Adjustable	N/A	N/A	N/A
Timing	Adjustable	Adjustable	Adjustable	Adjustable
Motor Rotation	Adjustable	Adjustable	Adjustable	Adjustable
DEO Technology /Freeheeling	Adjustable	Adjustable	Not Adjustable (Default: Enabled)	Not Adjustable (Default: Enabled)
Start-up Force	Adjustable	Adjustable	Adjustable	Adjustable

(2) Programmable Parameters & Parameter Values. (** in the form below indicate factory defaults.)

Values	Parameter	Option 1	Option 2	Option 3	Option 4
1	Flight Mode	Fixed Wing	Helicopter (External Governor)	Helicopter (EIF Governor)	Helicopter (Store Governor)
2	LiPo Cells	*Auto Calculation	3-6S		
3	Voltage Cutoff Type	*Soft Cutoff	Hard Cutoff		
4	Cutoff Voltage	Disabled	2.80-3.8V (Default: 3.0V)		
5	BEC Voltage	5V-8V (Default: 6V)			
6	Response Time	0-21 (Default: 13)			
7	Governor Parameter P	0-9 (Default: 4)			
8	Governor Parameter I	0-9 (Default: 5)			
9	Auto Restart Time	0-90s (Default: 25s)			
10	Restart Acceleration Time	1-3s (Default: 1.5s)			
11	Brake Type	* Disabled	Normal	Proportional	Reverse
12	Brake Force	0-100% (Default: 0%)			
13	Timing	0°-30° (Default: 15°)			
14	Motor Rotation	*CW	CCW		
15	DEO Technology /Freeheeling	*Enabled	Disabled		
16	Start-up Force	1-7 (Default: 3)			

Explanations for Programmable Parameters

- Flight Mode**
 - Fixed-wing**: In this mode, the motor only starts up when the throttle amount reaches 5% or above and it responds to the throttle input rapidly.
 - Helicopter (External Governor)**: In this mode, the motor only starts up when the throttle amount reaches 5% or above, it will run in either way:
 - 1) When setting to "Soft Start-up Enabled", the motor will start up in a soft way and then quickly accelerate to the speed corresponds to the current throttle amount after the soft start-up completes.
 - 2) When setting to "Soft Start-up Disabled", then there will be no soft start-up and the motor will respond to the throttle input rapidly.
 - Regarding "Soft Start-up Enabled/Disabled"**: please set it to "Soft Start-up Enabled" when not using any speed-governing device; please set it to "Soft Start-up Disabled" when using an external speed-governing device (i.e. gyro) to avoid it conflicts with the soft start-up function of the external speed-governing device. Meanwhile, please set the "DEO Technology/Freeheeling" to "Disabled".
 - Helicopter (EIF Governor)**: In this mode, the motor only starts up when the throttle amount reaches 40% or above; the motor will start up in a very soft way, (the RPM standardization will complete during this process,) and enter the speed-governing operation after the throttle amount reaches 40% or above; the motor will start up in a very soft way and enters the speed-governing operation after the soft start-up completes and the RPM gets stable. Every time when adjusting the flight mode from any other mode to this mode, you need to standardize the RPM, otherwise the speed-governing function cannot function normally. If your ESC remains in this mode in future, then you won't need to standardize the RPM again.
- LiPo Cells**

The ESC will automatically calculate the number of LiPo cells you have plugged in as per the "3.7V/Cell" rule if "Auto Calc." is selected; and we recommend setting this item manually when you're using a Life or LHV battery. For the Platinum 25A V4 ESC: it is adjustable between 3s and 6s when setting this item manually. For the Platinum 40A V4 ESC: it is adjustable between 3s and 4s when setting this item manually.
- Voltage Cutoff Type**

Soft Cutoff: If this item is selected, the ESC will gradually reduce the output to 50% of the full power when the voltage cutoff protection is activated.

Hard Cutoff: If this item is selected, the ESC will cut off the output immediately when the voltage cutoff protection is activated.
- Cutoff Voltage**

This item is adjustable between 2.8V and 3.8V with the step of 0.1V, it's 3.0V by default. It is the voltage of one cell, if you're using a 3S LiPo, then the final cutoff voltage of your battery is: the value you set *3.
- BEC Voltage**

This item is for adjusting the output voltage of the BEC. For the Platinum 25A V4 ESC: the output voltage is adjustable between 6V and 7.4V, it's 6V by default. For the Platinum 40A V4 ESC: the output is adjustable between 5V and 8V with the step of 0.1V, it's 6V by default.
- Response Time**

This item is for adjusting the throttle response, the higher the value, the slower the throttle of the motor. In the "Fixed-wing" mode, any adjustment to this item will be void. In the "Helicopter (External Governor)" mode, this item will turn into "Soft Start-up Enabled/Disabled", select "0" is to disable the "Soft Start-up" function and select "any value between 1 and 21" is to enable the "Soft Start-up" function. In the "Helicopter (EIF Governor)" or "Helicopter (Store Governor)" mode, this item is adjustable from 5 and 21 with the step of 1 (it will be 5 even if you set it to any value between 0 and 5), it's 13 by default (we recommend using the default setting).
- Governor Parameter P**

This item is for controlling the ESC compensate the amount of the motor speed during the process of maintaining the speed-governing effect; the higher the value, the bigger the amount; and vice versa. This function functions together with the Governor Parameter I.
- Governor Parameter I**

This item is for adjusting the response speed of the "Governor Parameter P". The higher the value, the slower the response speed; and vice versa.
- Auto Restart Time**

This function is effective only in the "Helicopter (EIF Governor)" mode and the "Helicopter (Store Governor)" mode. When moving the throttle stick from above 40% to any position between 25% and 40% and then back to above 40% with the present time period, the motor will skip over the soft start-up process, start up and accelerate to the speed (in the programmed Restart Acceleration Time) corresponds to the current throttle amount rapidly, complete the shutdown and restart up. When the throttle amount is below 25%, or keep the throttle stick at any position between 25% and 40% for more than the present time (Auto Restart Time), the "Restart Acceleration Time" will be void. In that case, the motor will start up in the default way in the "Helicopter (EIF Governor)" mode and the "Helicopter (Store Governor)" mode when moving the throttle stick to above 40%.
- Restart Acceleration Time**

This item is adjustable between 1s and 3s with the step of 0.5s, it's 1.5s by default. It controls the time the motor needs for starting from standstill and accelerating to the full speed when you want to rapidly restart the motor during the preset "Auto Restart Time". (Note: it is an auxiliary function to the "Auto Restart Time", it only effects in the condition that "Auto Restart Time" is effective.)
- Brake Type**
 - Normal Brake**: after selecting this option, if you move the throttle stick to the bottom position, then the ESC will brake the motor as per the preset brake force.
 - Proportional Brake**: after selecting this option, the throttle range on the transmitter is between 20% and 100%, the corresponding ESC throttle output is between 0% and 100%. When the throttle range on the transmitter is between 20% and 0%, the corresponding brake force is between 0 and 100%.
 - Reverse Brake**: after selecting this option, the RPM signal wire will turn into a reverse signal wire (the signal range is in line with the corresponding throttle curve). Please plug this wire into an occupied channel on the receiver and you can control this channel via the transmitter to change the motor rotation. Any signal loss will activate the throttle signal loss protection, no matter it happens to the RPM signal wire or the throttle signal cable during the flight.
- Brake Force**

This item is for only effective in the "Normal Brake" mode. When moving the throttle stick to the bottom position, it controls the brake speed (it's the speed that motor comes to a standstill from rotation). The higher the value, the more powerful the brake force and the shorter the time (from rotation to standstill).
- Timing**

This item is for adjusting the ESC timing, it's adjustable between 0 and 30° with the step of 1° (it's 15° by default).
- Motor Rotation**

This item is for setting the rotation direction of the motor, it's "CW" by default. After connecting the motor to the ESC, (if the motor rotates clockwise), when setting this item to "CCW", the motor will rotate counterclockwise, (if the motor rotates counterclockwise), when setting this item to "CCW", the motor will rotate clockwise.
- DEO Technology/Freeheeling**

This item can be enabled or disabled when the "Flight Mode" is set to the "Fixed-wing" or "Helicopter (External Governor)" mode; it's fixed at "Enabled" when the "Flight Mode" is set to the "Helicopter (EIF Governor)" or "Helicopter (Store Governor)" mode. With this item enabled, the throttle linearity will be great.
- Start-up Force**

This item is for adjusting the start-up force of the motor (during the start-up process). The higher the value, the larger the start-up force. It's adjustable between 1 and 7 (and it's 3 by default).

07 Speed-governing Function

1 Explanation for ESC Speed-governing

- Establish the "Motor RPM-Throttle Amount Curve" via the speed standardization, and then set the throttle amount to some fixed value on the transmitter, in that condition, the motor will output the RPM corresponds to the throttle amount and keep rotating at that speed.
- In the "Helicopter (EIF Governor)" mode, the ESC won't save the "Motor RPM-Throttle" curve after it's disconnected from the battery, so every time the ESC is connected to the battery, it will standardize the speed, otherwise you'd different with the speed-governing function in this mode, due to the differences like battery's different discharge capacity, the standardized RPM is a little different every time. In consequence, at the same throttle amount, the RPM may be a bit different when using different batteries, but this won't affect the speed-governing effect.
 - In the "Helicopter (Store Governor)" mode, the ESC will save the "Motor RPM-Throttle" curve after the speed standardization. So after adjusting to this mode from any other mode, you need to standardize the speed when the ESC is connected to the battery for the first time and you needn't standardize the speed again after disconnecting the ESC from the battery first and then connecting it to the battery again. If adjusting to any other mode from this mode and saving the "Motor RPM-Throttle" curve, and then adjusting back to this mode, the "Motor RPM-Throttle" curve saved by this mode will be cleared, and you need to standardize the speed once again. If your ESC remains in this mode in future, then it will always carry out its operation as per the saved "Motor RPM-Throttle" curve. When standardizing the speed for the first time, we recommend using a battery in good condition. After the RPM standardization, change another battery with the same number of cells to fly your aircraft. At the same throttle amount, the RPM should be consistent with the RPM of the first flight.

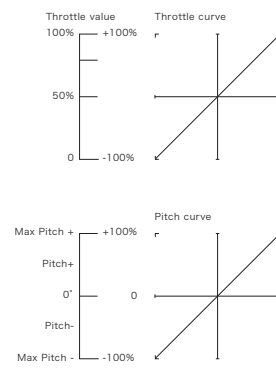
2 RPM Standardization

- Theory of RPM Standardization**

During the RPM standardization, the ESC will establish a "Motor RPM-Throttle" curve by itself based on the actual battery voltage and the actual KV rating of the motor. Therefore, you need to standardize the speed with a fully charged battery, and ensure the main blade pitch is 0° (in order to make the helicopter not take off). In general, people use the default "Throttle Curve & Pitch Curve" of the transmitter (as shown below) when they standardize the speed.

Attention! Please ensure the main blade pitch is 0° and the throttle amount is above 40% (we recommend using 50%) when standardizing the speed.
- Procedures of RPM Standardization**
 - We recommend using the default "Throttle Curve & Pitch Curve". If you don't want to use the default setting, then please ensure the throttle amount is 50% and the main blade pitch is 0° when the motor rotates.
 - Turn on the transmitter, move the throttle stick to the bottom position and then wait for the ESC completing the self detection.
 - If you've set the "throttle cut" function, please lock the "throttle cut", and then move the throttle stick to the 50% position and then unlock the "throttle cut". If there is no "throttle cut", then you can move the throttle stick to the 0% position directly.
 - The ESC drives the motor to rotate, the main blades start to accelerate slowly because the main blade pitch is 0°, so the helicopter won't take off, but you still need to be careful, you need to wait for the acceleration completing and the speed getting stable, and then lock the "throttle cut" or move the throttle stick to the bottom position.
 - The ESC will stop driving the motor, the main blades start to slow down and then stop rotating.
 - The RPM standardization completes.

Attention! Please calibrate the throttle range before the RPM standardization. There will be no need if you've carried out the ESC/Radio Calibration when the first time you used this ESC or you didn't restore the settings to factory defaults after the calibration (changing the transmitter & receiver is an exception).

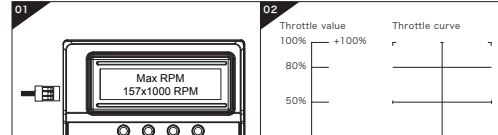


3 How to Set the Speed-governing Function

- The best throttle amount (set in the Helicopter "Store Governor" mode) of the ESC ranges from 70% to 90%, so please try to set the throttle amount (set in the Helicopter "Store Governor" mode) within this range. A low throttle amount (set in the Helicopter "Store Governor" mode) will make the ESC always function inefficiently, while a high throttle amount (set in the Helicopter "Store Governor" mode) will leave the ESC a very small compensation space, then compensation insufficiency issue may happen and cause (speed decrease) problem when the load is high. In that case, we recommend changing the motor or drive gear ratio (you need to re-standardize the speed after you change the motor or drive gear ratio).
- In the "Helicopter (Store Governor)" mode, if you fly your aircraft with a low performance battery after standardizing the speed with a high performance battery may cause damage to the low performance battery.
- In "Helicopter (Store Governor)" mode, different battery packs can bring the same stable RPM only if they have the same cell count. This won't change even when you change the battery pack. However, battery packs with different cell count don't have the same effect. For instance, in "Helicopter (Store Governor)" mode, you can't use a 4S to calibrate the motor RPM and then use a 6S to drive the motor, hoping it can run at the same RPM.
- You can check the control via adjusting Governor Parameter P. In "Helicopter (Store Governor) or Helicopter (EIF Governor)" mode, connect your ESC to a smart phone or PC, then you can decide the "throttle vs speed" chart.

- In "Helicopter (Store Governor)" mode, you can check the standardized speed (Max. RPM) and needn't standardize the speed every time when the ESC is connected to the battery as in the "Helicopter (EIF Governor)" mode, so it's more convenient. We recommend using this mode in the condition that you're using fixed motor, drive gear ratio and battery (with same cell count). In this mode, only if the drive gear ratio is accurate, the main blades' RPM corresponds to the throttle amount (set in the Helicopter "Store Governor" mode) you will get will be accurate as well. About how to "set the speed-governing function" in this mode, let's take an example.

- In "Helicopter (Store Governor)" mode, connect the ESC to the LCD program box or WiFi Express module when the RPM standardization completes, and then find the record (as shown in Figure 1) as per the instruction about the "data checking" process. The value shown in the image is just an example, please take the value actually displayed on your LCD program box as standard. This value is the max. electrical RPM the motor can reach at the 100% throttle.
- Take a helicopter with single reduction gear unit as an example, with the motor poles is 10, the motor drive gear is 13T and the main drive gear is 120T (that the drive gear ratio is 9.3), then you can get the main blades' RPM at the 100% throttle.



- Formula: Main Blades' RPM (at the 100% throttle)=Max. RPM*(Motor Poles ÷ 2)÷Drive Gear Ratio**
- The Main Blades' RPM (at the 100% throttle) in the example is: 157*1000*(10÷2)÷(120÷13)=3400 RPM. If the Main Blades' RPM needs to remain at 2700RPM during the 3D flight process, then you need to set the throttle amount (set in the Helicopter "Store Governor" mode) to 2700÷3400=0.8, that is you need to set the throttle amount to 80%. At this time, you need to set the value of the 3D throttle curve (i.e. IDLE1) to 80% (as shown in Figure 2). So next time, when you fly your helicopter, let it take off in the "Normal" mode first and then switch to the "IDLE1" mode directly, then your helicopter can start the 3D flight with 80% throttle amount (that's the standardized speed of 2700 RPM).
- In general, you can set and save 2/3 sets of throttle curve IDLE settings on a high quality transmitter (and you need to adjust the main blade pitch of each set of IDLE setting as per the actual demand), and switch between these settings during the flight and have the different throttle amount (set in the Helicopter "Store Governor" mode) to meet the different RPM demands (i.e. when setting IDLE1 to 70%, IDLE2 to 80%, IDLE3 to 90% in the way as explained earlier, then you will have three different throttle amounts set in the Helicopter "Store Governor" mode) to meet different flight demands.
- In the "Helicopter (EIF Governor)" mode, you are not allowed to check the Max. RPM, so you need to set the transmitter in advance and check the main blades' RPM with the help of some external device (like RPM viewer) and then decide the throttle amount you need to set. Here you can calculate the throttle amount roughly. For example, if the KV rating of the motor is 480KV, the battery is a 12S LiPo, the motor drive gear is 13T and the main drive gear is 110T, then the main blades' RPM is: KV Rating * Battery Voltage ÷ Drive Gear Ratio (480*12*4.2÷13=110÷2850). So if you want your motor to rotate at the speed of 2150RPM, then the throttle amount is: 2150÷2850=0.75 (that is 75%), and then you adjust it accordingly as per your preference or the data you read on the RPM viewer.

08 Warning Tones & Protections

1. Warning Tones

Trouble	Warning Tone	Cause
The input voltage is abnormal.	BB, BB, BB, ...	The input voltage was not within the regulated range.
The throttle signal is lost.	B—, B—, B—, ...	The ESC didn't detect any throttle signal input.
The throttle stick is not moved to the bottom position.	B, B, B, B, ...	The ESC detected that the throttle was above 0%.
The throttle range is too narrow.	B, B, B, B, ...	You set the throttle range too narrow during the ESC/Radio Calibration.
The ESC thermal protection is activated.	BB, BB, BB, ...	The internal temperature of the ESC went above the regulated temperature range.
The low-voltage cutoff protection is activated.	BBBB, BBBB, ...	The operating voltage went below the preset cutoff voltage.

2. Protections

- Start-up Protection**

The ESC will monitor the motor speed (RPM) during the start-up process. When the speed stops increasing or the speed increases is not stable, the ESC will take it as a start-up failure. At that time, if the throttle amount is less than 15%, then the ESC will automatically try to restart; if it is larger than 20%, then you