

# 950MX(440KV/4540) MOTOR USERMANUAL 馬達說明書 **ALIGN**

## 950MX MOTOR 關於950MX馬達

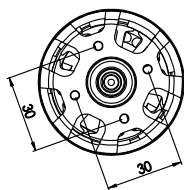
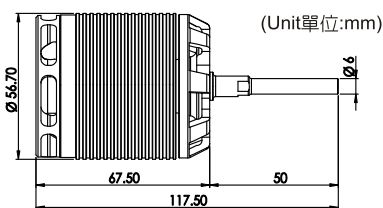


Power and torque requirements of enthusiasts, the high output 950MX brushless motor was born in Align's R&D lab. With dramatic increase in torque and power output, capable of 5300 watts continuous power output and 11000 watts of burst power!

950MX brushless motor has passed various thorough inspections made by our technical department, including motive testing, static testing, magnetic field testing, heat resistance and magnetic loss testing, running balance and vibration testing, noise testing, and many hours of actual loading and flying testing, etc. Align is proud to provide the latest innovations in RC Modeling to its consumers. Please enjoy your Align products safely.

亞拓特別針對大動力、高扭力的需求，研發設計出為極致動力而生的**950MX**無刷馬達，動力輸出與扭力表現大幅提升，持續輸出功率達**5300W**，瞬間最大輸出功率可達**11000W**。本公司生產的高扭力高轉速**950MX**無刷馬達，適用於**RC**電動商品，其高功率高效率輸出特性，適合電動飛機/電動槓保機之高扭力高轉速驅動動力用途，速度控制可採本公司或市售規格無刷電子變速器。轉子採用高磁性材料鈹鐵硼精製而成，定子採用本廠**NC**自動繞線與高強度樹脂成型保護，耐高溫低震動。心軸採高硬度高鋼性軸承鋼及雙**ZZ**高速精密軸承設計，且經由亞拓獨立開發設計技術，使用壽命長、效率高、耐撞不易變形、低磁損、高效能無刷馬達。該項新商品已通過本廠技術單位，實施精密嚴格動、靜態，磁場特性、強磁耐高溫磁損、連轉平衡震動及噪音、負載實測飛行動態性能等全項嚴格檢測。

## SPECIFICATION 尺寸規格



## ILLUSTRATION 接線示意圖



The motor rotates in different direction with different brand ESCs. If the wrong rotating direction happens, please switch any two cables to make the motor rotates in right direction.

由於各品牌電子變速器的馬達啟動轉向不盡相同，若發生轉向錯誤時，請將馬達與電子速器的接線任兩條對調即可。

<b>KV</b> KV值	<b>440KV(RPM/V)</b>	<b>Input voltage</b> 輸入電壓	<b>12S</b>
<b>Stator Diameter</b> 定子外徑	<b>45 mm</b>	<b>Stator Thickness</b> 定子高度	<b>40mm</b>
<b>Stator Arms</b> 矽鋼片槽數	<b>12</b>	<b>Magnet Poles</b> 磁鐵極數	<b>10</b>
<b>Max continuous current</b> 最大持續電流	<b>120A</b>	<b>Max instantaneous current</b> 最大瞬間電流	<b>250A(2sec/2秒)</b>
<b>Max continuous power</b> 最大持續功率	<b>5300W</b>	<b>Max instantaneous power</b> 最大瞬間功率	<b>11000W(2sec/2秒)</b>
<b>Dimension</b> 尺寸	<b>Shaft 軸 <math>\phi</math>6x56.7x117.5mm</b>	<b>Weight</b> 重量	<b>Approx.約 663g</b>

## FEATURES 特性說明

- 950MX features high efficiency, superior power, excellent torque, low current draw and low temperature; it's capable of maintaining consistent torque and head speed.
- 950MX's high efficiency and low current draw, the standard equipment electronic speed controller are sufficient to experience the power of this motor, and extend battery longevity.
- 950MX motor armature had a special balance adjust to improve the serious shaking problem.
- 950MX is adopted air blast in its end bell, creating powerful airflow to dissipate heat. Incorporate motor design and reduction in weight not only contributes to dramatic power increase, the high efficiency cooling system enables cooler operating temperature during and after flights when compared to motor of previous generation.
- Maintenance free, high torque, high efficiency, stable and quiet.
- High-speed ball bearings, powerful magnetic outrunner rotor.
- Suitable for ALIGN E1.
- 950MX馬達有著高效率、大動力、高扭力、低耗電與低溫的表現，大負載飛行可以感受豐沛扭力輸出，整段飛行都能維持一致的動力輸出，主旋翼幾乎是維持在固定轉速，不掉轉。
- 950MX馬達的高效率、低電流表現，只需要原廠的標準配備電子變速器，就能完全展現馬達的威力，與延長電池的使用壽命。
- 950MX馬達轉子皆經過特殊平衡校正，改善一般無外殼外轉馬達平衡不佳，易產生嚴重震動的缺失。
- 950MX採用新型鼓風式後蓋設計，提供強大的散熱氣流，搭配嚴密的調校與輕量化設計，不僅扭力大幅提升，高效率的散熱設計在飛行中與飛行後都較前一代馬達有更低的溫昇表現。
- 免保養、高扭力、高效率、低噪音、低溫昇、控制穩定。
- 高速滾珠軸承、高磁通外轉子。
- 適用於ALIGN E1機型。

**亞拓科技股份有限公司**  
**ALIGN CORPORATION LIMITED**

<http://www.align.com.tw>

2021.Jul.20 G20610